

MAHAN Trust
M-Meditation, A-AIDS, H-Health,
A-De-Addiction, N-Nutrition



Vision: Self Sustainable Healthy Human Being

Moved by the pathetic condition of tribal of Melghat, Dr. Ashish & Dr. Kavita Satav started the **NGO MAHAN** in 1997 with the aim of providing preventive & curative medical facilities & improving quality of life of tribals. **MAHAN** Trust's philosophy is to serve the last tribal of Melghat with complete dedication.

Melghat at a glance

Melghat is hilly forest area known to outside world for Malnutrition & wild life specially Project Tiger



Hard life:

- More than 80% are tribal, with Korku as a main tribe.
- More than 90% of the tribals are farmers or laborers, below poverty line, living very hard life & in huts.
- More than 50% are illiterate.
- Poor infrastructure or scarcity of benefits from govt. schemes reaching to needy poor tribals.

Extreme climatic conditions:

- Summer temp. as high as 48 deg. C.,
- Winter temp. as low as 2 deg. C.,
- Heavy rains up to 1500 mm hampering electricity, communication & transportation system for days together.



Before MAHAN intervention

High mortality rate :

- Under 5 children mortality rate was >100 & Infant mortality rate (IMR) was >70 per 1000 live birth.
- Prevalence of severe malnutrition was > 20%.
- High premature adults deaths & maternal mortality rate.
- Very high Home deliveries (>75%).

MAHAN Projects

- **Hospital and Critical Care Unit** - for treating serious patients, major surgeries, Plastic surgeries etc. More than 93,407 patients treated.
- **HBCC, SAMMAN, MCPEPAG**- local tribal females are trained as bare foot doctors to provide treatment in village itself. >1,34,000 patients treated.
- **Counselor Program**- to strengthen government hospitals by acting as watchdog and counsel tribal to avail medical facilities.
- **Blindness Control Program**- Eye care- refractive errors, cataract surgeries, glaucoma, etc.
- **Specialty camps** >20,845 patients treated in camps of paediatric, gynaecology, dental, ENT, etc.
- **'UMANG'- Deaddiction Program**- to reduce prevalent addiction by way of yoga, meditation & lifestyle change thus reducing mortality.
- **Kitchen Gardens & nutrition farms**- to provide long term sustainable solution to malnutrition- (>7500).
- **Socio-economic** -to improve the quality of life of tribal by various activity like facilitating various govt. schemes, Empowerment of tribal, encouragement of Gramsabha, etc.



Critical Patient- Management



HBCC -VHW at Work



MAHAN Impact

Dedicated scientific efforts, Service, Research, Advocacy & PIL by MAHAN team resulted into substantial improvements in the life of tribals.

- ✓ Significant reduction in under 5 children mortality by 68 % & severe malnutrition by 68% (p< 0.0001)
- ✓ More than 1542 severely malnourished children treated and saved with minimal case fatality rate of 0.3% (far better than WHO expected rate of 4%).
- ✓ Reduction in maternal mortality rate by 50%.
- ✓ Reduction in mortality rate in economically productive age group of 16-60 years by 49.4%.
- ✓ More than **2250** critical patients treated (heart attack, brain hemorrhage, cerebral malaria, snake bite, etc.) & pillars of nation have been saved.
- ✓ More than 897 life changing plastic surgeries (cleft palate, post burn contractures) performed (free of cost, worth crores of rupees).
- ✓ Overall > 4 lakhs patients benefited by counselor program (improved hospital delivery and severe malnutrition is reduced).
- ✓ Provided vision to > 21,300 patients, Eye Surgeries >1802(especially Cataract Operations), >2,75,000 people screened (students and villagers).
- ✓ Three villages became free from social drinking of alcohol & >200 people are de-addicted
- ✓ Saved lives of >30 critically injured people by rescuing from various accident sites.



'Muskan' post treatment.

She was born premature, smaller than rat.



Severely malnourished - Laxmi Before & After Treatment

MAHAN Impact

➤ **Policies**-Maharashtra state govt. framed 15 new policies, improved few existing ones & implemented models developed by **MAHAN**, at other places benefiting more than 5 lakhs Tribals across state

- Exposure of real status of malnutrition.
- Counselor program.
- Village Child Developmental Centers'
- Criteria for malnutrition.

➤ **Representation**-Member of various Indian & global bodies working on this subject like 'European Society of Pediatric Research', 'Bhavishya Alliance', 'Regional Representative of Advisor to hon. Supreme Court of India, for food security bill' & others.

➤ **PIL**-Hon. High Court (PIL filed by **KHOJ & MAHAN**), directed state govt. to re-instate Counselors at Govt. hospitals and changed 10 state policies.

➤ **Research Papers**-**MAHAN** presented research papers in 11 international journals & more than 10 international conferences .

➤ **Recognitions**-**MAHAN** is conferred with various awards like-Public Health Champion Award by WHO, REAL Global Award by 'Save The Children', UK, 'Best Tribal Research Project Award' by Indian Counsel of Medical Research, Americares Foundation's 'Spirit of Humanity' Award, Felicitation by Hon. Abdul Kalam, certificate of merit by world CSR forum , etc.

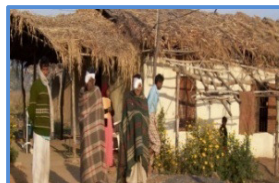
➤ **Testimonials**-**MAHAN** work is appreciated by various renowned personalities/bodies like- 'Rajmata Jijau Mission' of Maharashtra govt., 'Program officer of

UNICEF', ' National Human Rights Commission . I had remarkable experience seeing the hospital and then visiting the research personnel (of MAHAN Trust) in their home in the village. This maternal infant project demonstrates the power of low tech investigations to decrease infant mortality. Our discussion with the research team here have informed me how to think about the project for the US National Institute of Health – Maternal Infant Research Network, we will get great value and stimulation from the brief visit. Thank you very much!' – Alan H. Jobe, MD, PhD, Professor of Paediatrics and researcher, Children's Hospital, USA ,

Future Plans- Strengthening the existing programs, Initiating new research, Replication of successful models & Policy enhancement throughout Tribal India.



Initial OPD



Initial Indoor



Pediatric Check up



Door to Door Eye Check up



Operated cataract patients



Before & After Surgery



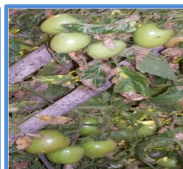
Happy Patients after Plastic Surgery



Gram Sabha



School Children Check up



Kitchen Garden



Felicitation by Hon. Abdul Kalam.



Fully Equipped OT



Sukrai', MAHAN VHW performed artificial respiration for 60 min & saved baby born with birth asphyxia '

Support MAHAN

- Your support can save lives of lakhs of tribal not only in Melghat but across India.
- Contribution to MAHAN is exempted (50%) under 80G act of Income Tax,
- One can support in the form of recurring expenses, Corpus, Construction, sponsor Malnourished children, Manpower & Expertise, Instruments, Medicine, building MAHAN Family / supporters network.
- PAN no. : AABTM0596Q (9/11/1998)

Beneficiary Details-

NON FCRA Account (for donation within India)

Name- MAHAN TRUST NON FCRA ACC;

Acc. No. -11743713379

IFSC code/RTGS code of the Bank SBIN0002150.

FCRA Account (for overseas donation)

Name-MAHAN TRUST DHARNI; Acc. No.-11743713368

IFSC code : SBIN0002150, MICR code 444002713

Swift Code : SBININBB239

State Bank of India, Dharni, Dist : Amravati, Maharashtra,- India -444 702

Supporting Pillars :

Caring Friends	SEARCH	Anu Aga-M.P.	Credibility Alliance
Arpan Foundation US	University of Colorado US	Nottingham University, UK	Stitching Geron, Netherlands
Mastek foundation	Baja Auto CSR	Syngenta Foundation	Paul Hamlyn Foundation
India GuideStar	CIIMS, Nagpur	Virgo Foundation	N.M.Budharani Trust
TAPAS India Foundation	Shree Raj Foundation	AmeriCare Foundation	Tribal Development Department
Wishing Well	Global Giving	Worldwide Doctors	Individuals

MAHAN Trust

C/o- Dr. Ashish Satav (M.D.)

Mahatma Gandhi Tribal Hospital, Karmagram, Utavali, Dharni, Dist. Amravati, Maharashtra, India - 444 702

Mobile +91 9423 118877,

E-mail: drashishsatav@gmail.com

Website-www.mahantrust.org

Blog- <http://melghatdiaries.mahantrust.org>

FB – mahantrust

Action speaks louder than word.